

# Like The Way I Do

moderately ♩=102

4 2

A

B

C

20

25

30

D

E

F

45

Like The Way I Do | S. 2

50 

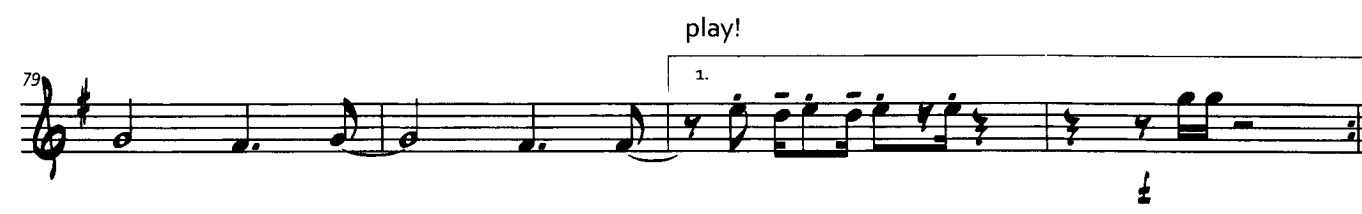
**G** 

59 

65 

69 

**H** 1.x tacet 

79 

83 

87 

# Like The Way I Do

moderately  $\text{♩} = 102$

Musical staff with dynamics markings 4 and 2. The staff contains a series of notes and rests, including a triplet of eighth notes and a quarter note.

A

Musical staff with first and second endings. The first ending is marked with a '1.' and the second ending with a '2.'. The staff contains a series of notes and rests.

B

Musical staff with first and second endings. The first ending is marked with a '1.' and the second ending with a '2.'. The staff contains a series of notes and rests.

C

Musical staff with measure number 20. The staff contains a series of notes and rests, including a triplet of eighth notes. Dynamics markings include  $sfz$  and  $mf$ .

Musical staff with measure number 25. The staff contains a series of notes and rests. A first ending is marked with a '1.'. Dynamics markings include  $mf$ .

Musical staff with measure number 30. The staff contains a series of notes and rests. A second ending is marked with a '2.'. Dynamics markings include  $mf$ .

D

Musical staff with first and second endings. The first ending is marked with a '1.' and the second ending with a '2.'. The staff contains a series of notes and rests.

E

Musical staff with first and second endings. The first ending is marked with a '1.' and the second ending with a '2.'. The staff contains a series of notes and rests.

F

Musical staff with measure number 45. The staff contains a series of notes and rests, including a triplet of eighth notes. Dynamics markings include  $mf$ .

Like The Way I Do | S. 2

50

mf

1.

G

2.

59

65

69

H

1. x tacet

79

play!

83

87

# Like The Way I Do

Words & Music: Melissa Etheridge  
Arr.: Peter Mocha

moderately  $\text{♩} = 102$

Musical staff with dynamics markings '4' and '2'. The staff contains a series of notes and rests, including a triplet of eighth notes.

A

Musical staff with first and second endings. The first ending is marked '1.' and the second ending is marked '2.'. The staff contains notes and rests.

B

Musical staff with first and second endings. The first ending is marked '1.' and the second ending is marked '2.'. The staff contains notes and rests.

C

Musical staff with dynamics markings 'mf' and 'sfz'. The staff contains notes and rests.

Musical staff with dynamics marking 'mf' and a first ending marked '1.'. The staff contains notes and rests.

Musical staff with dynamics marking 'mf' and a second ending marked '2.'. The staff contains notes and rests.

D

Musical staff with first and second endings. The first ending is marked '1.' and the second ending is marked '2.'. The staff contains notes and rests.

E

Musical staff with first and second endings. The first ending is marked '1.' and the second ending is marked '2.'. The staff contains notes and rests.

F

Musical staff with dynamics marking 'mf'. The staff contains notes and rests.

Like The Way I Do | S. 2

50

*mf*

1.

**G**

2.

59

65

69

**H**

1. x tacet

*mf*

79

play!

1.

83

2.

3.

87

*mf*

4.

# Like The Way I Do

Words & Music: Melissa Etheridge  
Arr.: Peter Mocha

moderately  $\text{♩} = 102$   
4

A

B

C

20

25

30

D

E

F

45

Like The Way I Do | S. 2

50

mf

1.

G

2.

59

65

69

H

1. x tacet

79

play!

1.

83

2.

3.

87

4.



# Like The Way I Do

Words & Music: Melissa Etheridge  
Arr.: Peter Mocha

moderately  $\text{♩} = 102$

Musical staff with dynamics 4 and 2. The staff contains a series of notes and rests, with a double bar line and repeat signs.

A

Musical staff with first and second endings. The staff contains a series of notes and rests, with a double bar line and repeat signs.

B

Musical staff with first and second endings. The staff contains a series of notes and rests, with a double bar line and repeat signs.

C

Musical staff with dynamics *mf*. The staff contains a series of notes and rests, with a double bar line and repeat signs.

Musical staff with dynamics *mf* and first ending. The staff contains a series of notes and rests, with a double bar line and repeat signs.

Musical staff with dynamics *mf* and second ending. The staff contains a series of notes and rests, with a double bar line and repeat signs.

D

Musical staff with first and second endings. The staff contains a series of notes and rests, with a double bar line and repeat signs.

E

Musical staff with first and second endings. The staff contains a series of notes and rests, with a double bar line and repeat signs.

F

Musical staff with dynamics *mf*. The staff contains a series of notes and rests, with a double bar line and repeat signs.

Like The Way I Do | S. 2

50

mf

1.

G

2.

59

65

69

H

1.x tacet

79

play!

1.

83

2.

3.

87

4.

# Like The Way I Do

moderately  $\text{♩} = 102$

4 2

A

1. 2.

B

1. 2.

20

C

25

1.

30

2.

D

1. 2.

E

1. 2.

F

45

Like The Way I Do | S. 2

50

1.

*mf* *f*

G

2.

*mf*

59

65

69

*mf*

H

1. x tacet

*mf*

79

play!

1.

*mf* *f*

83

2.

3.

*mf*

87

4.

*mf* *f*

# Like The Way I Do

Words & Music: Melissa Etheridge  
Arr.: Peter Mocha

moderately  $\text{♩} = 102$

4 2

**A**

**B**

**C**

20

25

30

**D**

**E**

**F**

45

Like The Way I Do | S. 2

50 

**G** 

59 

65 

69 

**H** 1.x tacet 

79 

83 

87 

# Like The Way I Do

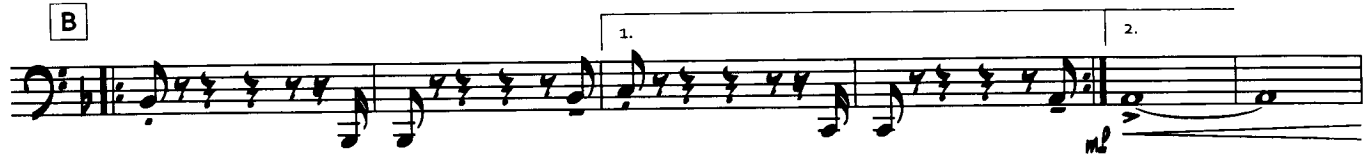
moderately  $\text{♩} = 102$   
4 2



A



B



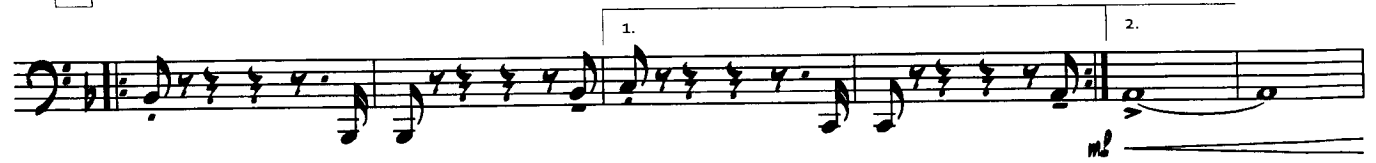
C



D



E



F



Like The Way I Do | S. 2

50

*mf*

1.

G

2.

59

65

69

H

1. x tacet

79

play!

1.

83

2.

3.

87

4.